



الجامعة السعودية الإلكترونية
SAUDI ELECTRONIC UNIVERSITY
2011-1432

Saudi Electronic University Sustainability Report 2024-2025



Published 2026, By the Vice-Deanship of
Development and Quality for Institutional
Excellence
Email: ie.rankings@seu.edu.sa

About the Saudi Electronic University (SEU)



الجامعة السعودية الإلكترونية
SAUDI ELECTRONIC UNIVERSITY
2011-1432

A Saudi-wide, public university with 15 branches and over 40,000 learners enrolled. Established in 2011, offering higher education services using best-in-class eLearning methods and technologies. The university's mission is to lead the utilization of technology and build local knowledge by partnering with renowned global institutions to contribute to the national development of Saudi Arabia.

In this report, we outline some of the many activities the university contributes to achieving the global Sustainable Development Goals (SDGs) in many fields, such as research, teaching, engagement/outreach, and operations, setting the university on a path to a more sustainable future for all.



1 NO POVERTY



NO POVERTY

End poverty in all its forms everywhere



INDIRECT POSITIVE IMPACT



الجامعة السعودية الإلكترونية
SAUDI ELECTRONIC UNIVERSITY
2011-1432

Since its founding in 2011, Saudi Electronic University has been working to combat poverty, focusing on those who live on campus, including staff, students, and the local community. There has been a lot of work over the last year, and can be summarized in the following 3 points:

Students funded programs statistics (2024-2025):

83



Activities

6104+



Beneficiaries

\$1.2 Million



Fund Amount

SEU has provided many supporting programs to the departments: the Financial Affairs Unit, Career Guidance and Alumni Office, and Loans and Assistance Division. The Student Fund works to develop the Student Fund's resources to achieve psychological stability for students in financial need and to support student activities and services.

SDG 1: No Poverty (2025):

27+



Scholarly Output

392+



Citations

Some of SEU faculty research and delivered educational programs have focused indirectly to end poverty. These efforts attempted to determine the factors influencing the degree of poverty in numerous programs that train local youth to be employable and prepare them for the workforce, empowering job seekers to overcome obstacles.

MOUs and initiatives to address poverty:

3+



MOUs

32+



Charity events

SEU addresses poverty by empowering vulnerable groups with skills and access to lifelong learning; hence, the university has signed MOUs with partners such as Insan Charity, the Ehsan platform, and the General Directorate of Prisons to expand inclusive education and training opportunities. Moreover, SEU launched the initiative "Ataa" with (Ehsan.Sa) for encouraging charitable work, promoting the values of national belonging, humanitarian work, and social responsibility among individuals.



SEU students at a career guidance program in Japan. [Link](#)



2 ZERO HUNGER



ZERO HUNGER

End hunger, achieve food security and improved nutrition and promote sustainable agriculture



INDIRECT POSITIVE IMPACT



الجامعة السعودية الإلكترونية
SAUDI ELECTRONIC UNIVERSITY
2011-1432

SEU has an indirect impact through its mission in education to innovate improved ways for everyone to access nutritious and healthy food sustainably which will require the strategic use of economic incentives, new forms of governance, and changes in existing values and behaviors.

Planting & nutrition programs statistics:

3+



Activities

100+



Beneficiaries

SEU contributes to national afforestation initiatives aligned with the Saudi Green Initiative, promoting sustainable agriculture and ecosystem restoration. Through participation in tree-planting efforts and environmental awareness, SEU helps support agricultural productivity and strengthen long-term food security.

SDG 2: Zero Hunger (2025):

34 +



Scholarly Output

4+



Projects for Ministry of Environment, Water and Agriculture

SEU outreach has impacted SDG 2 through funded faculty research and developed training and consultation programs for the Saudi Ministry of Environment, Water and Agriculture (MEWA). Programs for MEWA include environmental awareness campaigns, advisory support for environmental sector operations, and media services for agricultural subsidies. Currently, multiple projects are conducted focusing on agricultural development, environmental performance, and food safety inspections.



SEU celebrating environment national day, presenting Hydroponics and how to use fish waste to feed plants. [Link.](#)



3 GOOD HEALTH AND WELL-BEING



GOOD HEALTH AND WELL-BEING

Ensure healthy lives and promote well-being for all at all ages



DIRECT
POSITIVE IMPACT



الجامعة السعودية الإلكترونية
SAUDI ELECTRONIC UNIVERSITY
2011-1432

SEU is dedicated to fostering well-being and healthy lifestyles for students and staff. Good health and well-being are essential to sustainable development, which takes into consideration new issues like environmental and climate concerns and infectious diseases.

Awareness programs statistics (2024-2025)

24



Activities

251+



Beneficiaries

SEU delivered many awareness programs for individuals to educate them on how to maintain well-being and good health. The programs vary covering multiple topics, such as the concept of mental health and its impact on quality of life, the impact of technology on mental health, and future trends in digital health.

SDG 3: Good Health and Well-being (2025):

414+



Scholarly Output

7,856+



Citations

SEU advances SDG 3: Good Health and Well-being through funded faculty research, including dedicated e-health initiatives under its institutional R&D program supported by the Ministry of Education, fostering innovation in digital healthcare solutions.

Health Academic statistics (2024-2025):

68%

Of graduates from
health department
joined labor forces

799



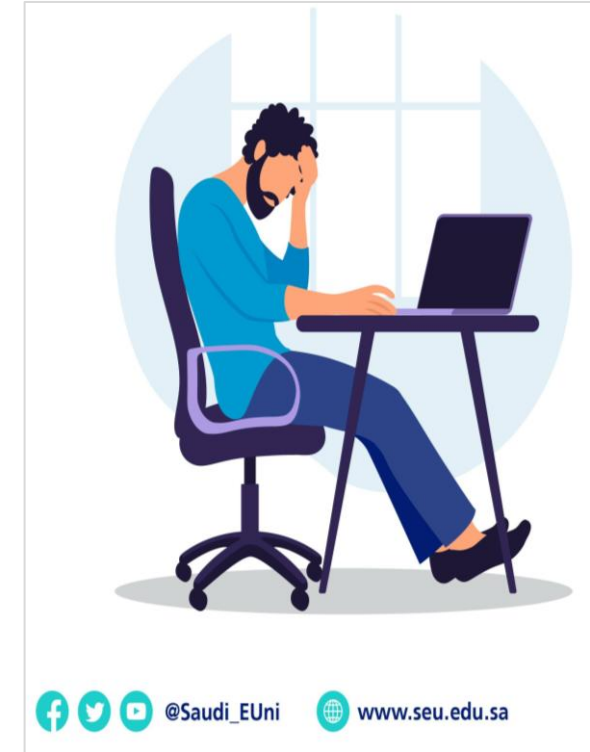
Graduates

4



Academic
Programs

Over 2,400 SEU students have graduated from bachelor's and master's programs health sector and joined the workforce in Saudi Arabia. The programs include a BA in Health Informatics, Public Health, and Health Management, and an MA in Health.



   @Saudi_EUni  www.seu.edu.sa

One of the SEU's training programs for students & staff about good health & wellbeing. [Link](#)



4 QUALITY EDUCATION



QUALITY EDUCATION

Ensure inclusive and equitable quality education and promote lifelong learning opportunities for all



الجامعة السعودية الإلكترونية
SAUDI ELECTRONIC UNIVERSITY
2011-1432

SEU as a pioneer of future learning in Saudi Arabia, is responding to fundamental changes in the world by capturing new opportunities created by local and global trends relating to economics, demographics, culture, technology, regulations, jobs market.

Awards for quality education (2024-2025):

4 QS stars overall
5 stars in teaching
5 stars in Employability
5 stars in internationalization



المؤشر الوطني
للتعليم الرقمي



SEU is a public university with 15 branches across the kingdom of Saudi Arabia with over 40,000 learners enrolled and is keen to promote inclusive, high-quality education for all. SEU advances SDG 4: Quality Education through its commitment to internationally recognized standards and continuous improvement in teaching and learning. Achieving ISO 9001:2015 certification reflects the university's strong quality management system in delivering higher education and lifelong learning. Additionally, its QS Stars 2024 rating (4 stars overall, 5 stars in teaching, employability, and internationalization) highlights excellence in educational quality, global standards, and graduate outcomes. SEU achieved the innovation level according to the National Digital Education Index 2023.

SDG 4: Quality Education (2025) :

112+



Scholarly Output

1,143 +



Citations

SEU supports SDG 4: Quality Education through research in e-learning, blended education, and AI-driven teaching methods that enhance accessibility and learning outcomes. In 2024, it has established the Center for Innovation in E-Learning, which advances the university's vision of leadership in technology-enabled education by conducting high-quality research and initiatives in e-learning methodologies and technologies.



SEU earns ISO certification for implementing a Quality Management System. [Link](#)



5 GENDER EQUALITY



GENDER EQUALITY

Achieve gender equality and empower all women and girls



الجامعة السعودية الإلكترونية
SAUDI ELECTRONIC UNIVERSITY
2011-1432

It's proven that empowering females helps economic growth and development. SEU has made gender equality central to its work and we've seen remarkable progress in the past years. There are more females in leading positions now compared to previous years.

Female faculty and students statistics (2024-2025)

49%



Students

47%



In senior positions

SEU commitment to gender equality (SDG 5), with women representing nearly 50% of both faculty and student populations. Women also hold 9 out of 19 senior leadership positions, reflecting meaningful representation in decision-making roles.

Programs impacting SDG 5 (2024-2025):

40+



Activities



Women empowerment club

Saudi women are an important element of the Kingdom's strength, and we will continue to develop their talents, invest their energies and enable them (Female students and faculty) to have the right opportunities to build their future and contribute to the development of our society and economy. SEU had established multiple event to empower female, such as "Women Leadership Camp", and "Women Empowerment Club".

SDG 5: Gender Equality (2025)

16 +



Scholarly Output

37



Female Researchers

SEU supported female students and faculty to develop their research capacity and skills, the "WEmpower" Research Accelerator Program was launched, in alignment with the drive to both empower women and build capacity in research development and productivity in Saudi Arabia.



Wempower, One of SEU's training program to accelerate Women's Research. [Link](#)



6 CLEAN WATER AND SANITATION



CLEAN WATER AND SANITATION

Ensure availability and sustainable management of water and sanitation for all



INDIRECT
POSITIVE IMPACT



الجامعة السعودية الإلكترونية
SAUDI ELECTRONIC UNIVERSITY
2011-1432

SEU's outreach has impacted this SDG through multiple awareness programs and collaborations many Saudi agencies concerning with providing safe and affordable drinking water for all by investing in adequate infrastructure and protecting and restoring water-related ecosystems is essential.

SEU outreach impacting SDG:

12,000+



Participants
Trained

3 MOU



With Water
Governmental Entities

SEU works towards increasing sustainable water-use efficiency across all sectors and ensuring the availability of freshwater supply for all in Saudi Arabia. To address water scarcity and sustainable management of water and sanitation for all, SEU has developed training and consultation programs for the Saudi Ministry of Environment, Water and Agriculture, the Saudi Water Desalination Corporation, and the Saudi National Water Company.

SDG 6: Clean Water and Sanitation (2025)

21+



Scholarly Output

4+



Programs for
Ministry of
Environment, Water
and Agriculture

SEU has launched a number of awareness campaigns and training programs for rationalization of water consumption and conservation. A series of awareness programs titled "Water Life Journey, the concept of the National Strategy for 2030" in collaboration with the Saudi National Water Company. Which aims to raise awareness among university students & faculty of the importance of water and the most important ways to rationalize its consumption. In addition, to educate about effective sustainable contributions to natural resource rationalization of water in all university facilities and installations.



SEU & Saudi Water Desalination Corporation signed a MOU to build a joint strategic cooperation. [Link.](#)



7 AFFORDABLE AND CLEAN ENERGY



AFFORDABLE AND CLEAN ENERGY

Ensure access to affordable, reliable, sustainable and modern energy for all



DIRECT
POSITIVE IMPACT



الجامعة السعودية الإلكترونية
SAUDI ELECTRONIC UNIVERSITY
2011-1432

SEU has adopted strategies across all campuses to cope with climate change in the environmental dimensions (air, water, waste, and public health), and it has been recognized by the Saudi Energy Efficiency Center for achieving a 100% commitment to rationalizing energy consumption.

SEU teaching model & energy consumption:

2 days



Online learning saves
50% of the energy
and resources
consumption

100%
commitment
كفاءة

المركز السعودي لكفاءة الطاقة
Saudi Energy Efficiency Center

For rationalizing
energy consumption

Following the “Blended Learning Model” students attend from home (Online) two days of their assigned lectures during the four days of the week, where no lectures are assigned on Thursdays. This method of teaching saves 50% of energy and resource consumption because students and lecturers both connect effectively and efficiently online from their homes across all SEU 15 branches.

SDG 7: Affordable and Clean Energy (2025)

157+



Scholarly Output

94,000 kWh



Renewable Energy

SEU has launched many awareness programs and initiatives across all campuses for energy management and efficiency, teaching about the role of institutions in conserving energy and raising awareness of how to rationalize and optimally invest in highly efficient devices. Educating about how the university seeks to achieve high efficiency in its energy consumption and bears the responsibility of research and development in new technologies to solve the problem of consumption.



The Energy Efficiency Center honoring SEU as a distinguished government entity for 100% level of improving energy consumption. [Link.](#)





DECENT WORK AND ECONOMIC GROWTH

Promote sustained, inclusive and sustainable economic growth, full and productive employment and decent work for all



At the national level, SEU's 2025 strategy will create 2,000 new jobs with 21,000 highly qualified workers entering the Saudi labor market, upskilling and reskilling 700,000 of the workforce. In terms of economic impact, SEU's strategy is expected to contribute \$2.4 billion to Saudi Arabia's GDP.

★★★★★
QS
5 QS stars
In employability

المرصد الوطني للعمل
National Labor Observatory

The highest percentage of employees perusing academic degrees among Saudi universities

SEU has sought to adopt the latest qualitative scientific programs and specializations that are compatible with the needs of the Saudi labor market and the requirements of sustainable development, in coordination with the Ministries of Labor and Social Development and Civil Service. It has also sought to qualify its graduates by bringing in the latest educational curricula in partnership with renowned global institutions to contribute to the national development of Saudi Arabia.

SDG 8: Decent Work and Economic Growth (2025)

180+
Scholarly Output

21k+
Workers join the labor market by 2025

SEU was established to expand its branches in all regions of Saudi Arabia and to meet the requirements of the labor market and the requirements of national development needs. Therefore, the university developed many training programs and courses as part of lifelong learning opportunities and in line with the needs of the Saudi labor market. SEU's five-years strategy will create 2,000 new jobs with 21,000 highly qualified workers entering the Saudi labor market, upskilling and enabling 700,000 of the workforce.



SEU seeks to align its technical educational outputs with the requirements of the labor market and the future jobs. [Link.](#)





INDUSTRY, INNOVATION AND INFRASTRUCTURE

Build resilient infrastructure, promote inclusive and sustainable industrialization and foster innovation



DIRECT
POSITIVE IMPACT



الجامعة السعودية الإلكترونية
SAUDI ELECTRONIC UNIVERSITY
2011-1432

SEU has accomplished distinguished growth in Technopreneurship through strengthening spreading entrepreneurial and innovation culture, developing applied scientific research capabilities with a focus on e-disciplinaries, and strengthening its consultancy with communities across Saudi Arabia.

SDG 9: Industry, Innovation and Infrastructure (2025)

214+



Scholarly Output

11



Patents

SEU actively supports SDG 9: Industry, Innovation and Infrastructure, with 214 publications by 2025 contributing to this field, alongside the achievement of 9 international patents and 2 local patents, reflecting its growing impact in research, innovation, and technological advancement.



SEU participates with 3 inventions at the 49th International Exhibition of Inventions of Geneva (2024). [Link.](#)

أسس

منصة تدريب رواد الأعمال
Online Training for Entrepreneurs

"Asus" Entrepreneurship
Training Platform

3

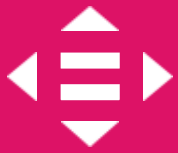


New research and
innovation centers

SEU, in collaboration with the Ministry of Education, launched the "Asus" Entrepreneurship Training Platform to develop skills in entrepreneurship, innovation, and marketing through flexible, self-paced learning and expert guidance. Also, SEU has established three research and innovation centers, strengthening its ecosystem for research excellence, entrepreneurship, and sustainable development.



10 REDUCED INEQUALITIES



REDUCED INEQUALITIES

Reduce inequality within and among countries



SEU with 15 branches and over 40,000 learners enrolled, offers higher education services to everyone, expanding access for students who require flexibility, live in remote areas, have obligations that conflict with regular university schedules, or have physical disabilities that call for specialized services.

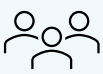
Statistics impacting SDG 10 (2025):

15 branches



Regional outreach reducing inequality

10k+



Beneficiaries in surrounding communities

SEU with 15 branches and over 40,000 learners enrolled, offers higher education services to everyone reducing inequalities in education opportunities, within and among Saudi Arabia. In addition to its role of providing higher education, SEU developed many programs for the surrounding communities of its 15 branches including training and development, plugging skills gaps locally and regionally, impactful research, entrepreneurship, and strategic partnerships.

SDG 10: Reduced Inequality (2025)

49+



Scholarly Output

6



Units to enhance social, mental, and academic well-being

SEU applies strict rules and regulations within all campuses that prohibit all forms of discrimination based on gender, color, age, race, ethnicity, religion, nationality, marital status, or disability. In addition, SEU encourages its students, faculty, and staff to denounce and report any discriminatory act, such as bullying, racial persecution, or gender-based or sexual harassment. SEU provides six specialized support units to enhance students' social, mental, and academic well-being. Additional units focus on career guidance and support for students with disabilities.

Agreement between the Royal Commission For AIUla and Saudi Electronic University



SEU and the Royal Commission for AIUla sign a cooperation agreement to establish a university branch in AIUla.



11 SUSTAINABLE CITIES AND COMMUNITIES



SUSTAINABLE CITIES AND COMMUNITIES

Make cities and human settlements inclusive, safe, resilient and sustainable



الجامعة السعودية الإلكترونية
SAUDI ELECTRONIC UNIVERSITY
2011-1432

SEU leadership in providing scalable, efficient, resilient, and dependable higher education across 15 cities in Saudi Arabia, has advanced its responsibility to organize events & support research for achieving inclusive, safe, resilient, and sustainable cities and communities.



Government
Expenditure & Projects
Efficiency Authority

SEU reduced its environmental impact and set an example for sustainable practices by integrating sustainability into every aspect of campus operations. Comparing SEU to traditional institutions, its operating model has increased operational efficiency by more than 70% and improved physical space usage by 10%. Furthermore, it has achieved outstanding levels of expenditure efficiency through strategic measures.

SDG 11: Sustainable Cities and Communities (2025)

94+



Scholarly Output

10k+



Beneficiaries in
surrounding
communities

SEU contributes to SDG 11 by promoting inclusive and accessible education through its e-learning and blended learning models, reducing the need for physical commuting and supporting resource efficiency. With 15 branches across different cities, including areas with limited access to higher education, SEU expands educational opportunities and fosters regional development. Through community partnerships and outreach initiatives, the university enhances social inclusion and knowledge-based communities.

ندوة: التسامح والتعايش المجتمعي، الواقع والتطلعات

16 شوال 1446



Seminar titled: "Tolerance and Social Coexistence: Reality and Aspirations"





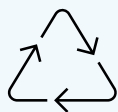
RESPONSIBLE PRODUCTION AND CONSUMPTION

Ensure sustainable consumption and production patterns



SEU is at the forefront of the push for sustainable waste management and consumption through a number of local, national, international, academic, and industrial partnerships. Through a variety of initiatives, activities, and studies, SEU ensures sustainable consumption and production patterns.

Policies impacting SDG 12:



Waste Management Policy
[\(Link\)](#)



Sustainable Food & Beverage Policy
[\(Link\)](#)



Hazardous Waste Management Policy
[\(Link\)](#)

SEU has developed and implemented policies that address ethical food sourcing and supply, as well as various waste disposal issues, such as the hazardous Waste Management Policy, Sustainable Food & Beverage Policy, and Waste Management Policy. The policies are part of the university's sustainability framework and underpin the university's sustainability policy. The policy aims to reduce the negative environmental impacts of our waste, reduce landfill waste, and ensure the disposal of waste materials (Plastic, Paper, Glass, and Metal) in an environmentally responsible manner.

Industrial partnerships impacting SDG 12 (2025):

Industrial partnerships



Charitable Society for Computer Rehabilitation



المركز الوطني لإدارة النفايات
National Center for Waste Management

National Center for Waste Management

Through a variety of initiatives, activities, studies, and industrial partnerships, SEU spread among students, faculty, and staff sustainable consumption practices. The university, in cooperation with the Charitable Society for Computer Rehabilitation "Irtiqa", organized an awareness program on the consumption of plastic and electronic waste, specifically for the computer rehabilitation and recycling stages. This program aimed to spread social responsibility on how to preserve the environment and protect it from electronic waste, in cooperation with the environmental partner Tadweer.



SEU Jeddah Showcases Student Innovation and Entrepreneurship at "Made by My Hands" Exhibition





CLIMATE ACTION

Take urgent action to combat climate change and its impacts



INDIRECT
POSITIVE IMPACT



الجامعة السعودية الإلكترونية
SAUDI ELECTRONIC UNIVERSITY
2011-1432

SEU is committed to achieving SDG 13 via a variety of initiatives, activities, studies, and industrial partnerships. As an educational institution, SEU plays a critical role in increasing awareness, establishing climate-resilient communities, and encouraging collaboration at the local and regional levels.

Relevant research/programs impacting SDG 13 (2025):

72+



Scholarly Output

4+



Programs for
Ministry of
Environment, Water
and Agriculture

SEU outreach has impacted this SDG through funded faculty research and developed training and consultation programs for the Saudi Ministry of Environment, Water and Agriculture (MEWA). The programs delivered for MEWA includes (1) Providing environmental awareness services and organizing awareness campaigns in the Ministry's branches in the Kingdom. (2) Providing advisory services to support the implementation of the operational framework for the environment sector. (3) Providing media services for the agricultural subsidies program for the Ministry of Environment, Water and Agriculture.



The Sustainable Development Club empowers students with environmental and social awareness, leadership skills, and community engagement.



14 LIFE BELOW WATER



LIFE BELOW WATER

Conserve and sustainably use the oceans, seas and marine resources for sustainable development



INDIRECT
POSITIVE IMPACT



الجامعة السعودية الإلكترونية
SAUDI ELECTRONIC UNIVERSITY
2011-1432

Educational institutions are crucial in promoting awareness and running initiatives to prevent damage to the aquatic environment. Reducing ocean acidification and pollution should be the main goals of the research, which is accomplished through collaboration at all levels.

SEU outreach impacting SDG 14 (2025):

5+



Scholarly Output

4 MOU



To prevent damage
to the aquatic
environment

SEU conducted many training programs for those who are involved in daily bases with marine life such as the Saudi Naval Forces. In addition to gathering information on the condition of regional marine ecosystems and the effects of human activity, SEU has funded academic research on subjects like ocean health, sustainable fishing, and marine life.



One of the SEU outreach programs for governmental entities such as Saudi Naval Forces. [Link.](#)



15 LIFE ON LAND



LIFE ON LAND

Protect, restore and promote sustainable use of terrestrial ecosystems, sustainably manage forests, combat desertification, and halt and reverse land degradation and halt biodiversity loss

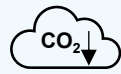


Deserts cover much of the Kingdom of Saudi Arabia's land area. In order to maintain current land use and stop or reverse desertification, it is crucial for the Kingdom to maintain life on land. Maintaining livelihoods depends on the utilization of land to support human life.

Policies impacting SDG 15 (2025):



Waste Management Policy
[\(Link\)](#)



Carbon Emission Reduction Policy
[\(Link\)](#)



Hazardous Waste Management Policy
[\(Link\)](#)

By carrying out its policies on the reduction of carbon emissions, plastic waste, and the disposal of hazardous waste, SEU is dedicated to guaranteeing the preservation of its territory. SEU has developed and implemented policies that address Carbon Emission Reduction, as well as various waste disposal issues, such as the hazardous Waste Management Policy, Environmental and Sustainability Policy, and Waste Management Policy. The policies aim to reduce the negative environmental impacts of our Carbon Emissions Reduction, and waste is in an environmentally responsible manner.

Relevant research/programs impacting SDG 15 (2025):

19+



Scholarly Output

10k+



Beneficiaries in surrounding communities

SEU organized multiple activities the university contributes to maintain current land use and stop or reverse desertification in many fields, such as research, teaching, engagement/outreach, and operations, setting the university on a path to a more sustainable future for all.



One of the awareness program on promoting sustainable use of terrestrial ecosystems. [Link.](#)





PEACE, JUSTICE AND STRONG INSTITUTIONS

Promote peaceful and inclusive societies for sustainable development, provide access to justice for all and build effective, accountable and inclusive institutions at all levels



SEU's governance measures are based on the foundations and principles of justice, and on the principles of equal opportunities, transparency, accountability, professional integrity, neutrality, and loyalty to the university achieving its mission and goals and bearing responsibility.

Policies impacting SDG 16 (2025):



Student Rights And Responsibilities Policy
[\(Link\)](#)

In order to achieve justice for its students, transparency, fairness, and equality for all, SEU guarantees the rights of students and seeks to educate them about their rights and responsibilities towards others, to establish student affiliation with the university. The university has formed student rights protection committees for student rights protection at two levels, the university & the college levels.

Relevant research/programs impacting SDG 15 (2025):

44+



Scholarly Output

2



Academic law Programs

88%



Employed Law Alumni

Through its educational mission, SEU offers two Law programs at the undergraduate and graduate levels. The goal is to promote peaceful and inclusive societies for sustainable development and provide access to justice for all. The programs empower the students with interaction between Saudi rules and regulatory laws, and ensure the development of the student's personal skills, by presenting it through technological educational means, in order to prepare specialized and modernly qualified cadres that enable them to participate in various development sectors.



SEU Law Club Organizes Student Visit to Shura Council Headquarters





PARTNERSHIPS FOR THE GOALS

Strengthen the means of implementation and revitalize the global partnership for sustainable development



SEU believes that in order to successfully accomplish the SDGs, collaboration is crucial. Governments, academic institutions, businesses, nonprofits, and the private sector must all work together to address the global issue of sustainable development.

Research Collaboration (2025)

73%



International

10.5%



National

SEU demonstrates strong commitment to SDG 17 through extensive research collaborations. International collaboration represents 72.9% of its research output, reflecting a highly globalized research network. National collaboration accounts for 10.5%, indicating continued engagement at the local level. Furthermore, The Saudi Electronic University has established international partnerships with Newcastle University and University of Strathclyde to enhance joint research, academic programs, and knowledge exchange.

Relevant events impacting SDG 17 (2025):

163+



Countries accessed the Arabic Online program

7+



Conferences & events

SEU worked with regional and international organizations to expand on previous efforts to create metrics of sustainable development progress that supplement gross domestic product and support statistical capacity-building in developing national challenges, in accordance with the university's social responsibility and role in advancing the nation's intellectual, scientific, and research movement. One of the pioneer global outreach programs is the Arabic Online, which provides distinguished Arabic language education for non-native speakers in 163 countries around the world.



SEU Wins Mohammed bin Rashid Arabic Language Award for Best Initiative in Teaching Arabic to Non-Native Speakers





الجامعة السعودية الإلكترونية
SAUDI ELECTRONIC UNIVERSITY
2011-1432

Saudi Electronic University Sustainability Report

Published 2026, By the Vice-Deanship of
Development and Quality for Institutional
Excellence
Email: ie.rankings@seu.edu.sa